

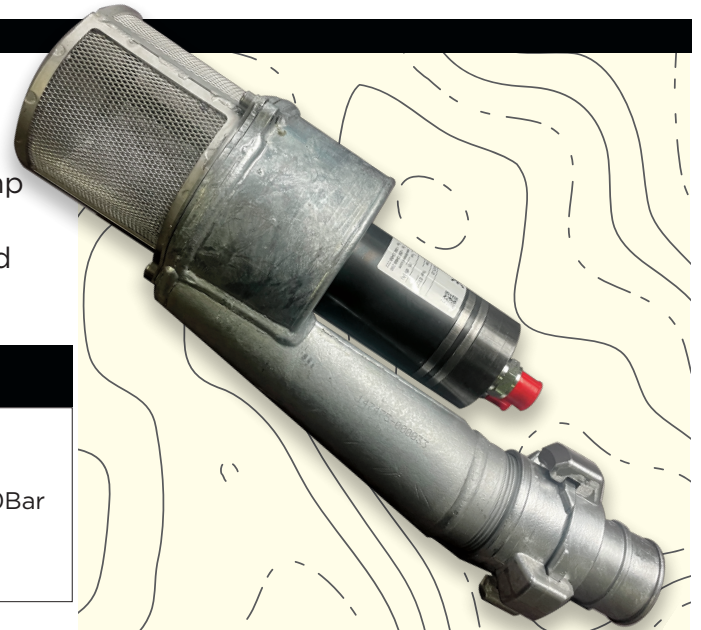


**NORTHWEST  
Drills**

# HYDRAULIC SUBMERSIBLE CIRCULATION PUMP NW-SP1137

## HYDRAULIC SUBMERSIBLE CIRCULATION PUMP

This lightweight Hydraulic Submersible Circulation Pump is an extremely durable supply pump designed to run seamlessly 24/7. A unique product framed in galvanized steel along with quality industry leading components.



### Technical Information

#### Pump Unit

**Part Number:** NW-SP1137

**Water Output:** 5cm (2")

**Weight:** 9kg (20lbs)

**Operating Time:** 24/7 Cycle

#### Power Unit

**Source:** Hydraulic Oil

**Requirements:** 38lpm oil up to 260Bar

**Pressure Line:** BSP 1/2" or -8

**Tank Line:** BSP 1/2" or -8

NW-DS1010 RECIRCULATION SYSTEM / NW-PP1001 TRASH PUMP

# WATER CIRCULATION SYSTEM

## WATER CIRCULATION SYSTEM

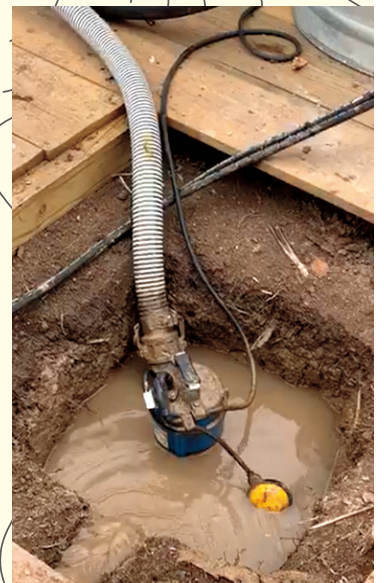
Designed for its efficiency, our water circulation system (NW-DS1010), paired with our automatic trash pump (NW\_PP1001), is the perfect solution to recirculate and clean return fluids, saving water and the environment.



TRASH PUMP



SEPARATOR



### Technical Information

#### Separator

**Part Number:** NW-DS1010

**Dimensions:** 61cmx61cmx122cm  
(24"x24"x48")

**Weight:** 20kg (44lbs)

**Flow Range:** 19-32 USGPM

**Max Pressure:** 10.3 Bar (150PSI)

#### Trash Pump

**Operating Time:** 24/7 Cycle

**Capacity:** 10,000 lpm

**Height:** 13cm (5")



Visit our website  
NWDrills.com  
for more details



NorthWest Drills  
11819 Tannery Rd.  
Surrey, BC Canada  
1.604.371.0303

Diamond Drilling Supplies  
Calle 74 2006 COL  
Cerro De La Cruz  
Chihuahua, Chihuahua, Mexico  
+52.614.256.9797