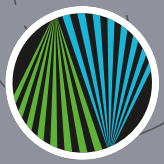




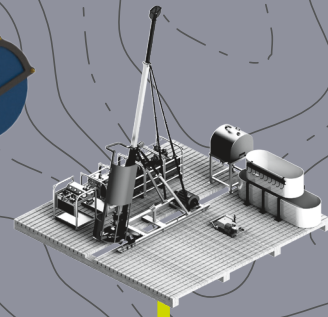
**NORTHWEST Drills**  
The Leaders In Groundbreaking Innovations

# NW750

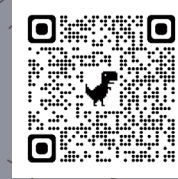
MAN PORTABLE SERIES



**NORTHWEST Drills**



- 150 M
- 350 M
- 500 M
- 750 M**
- 1500 M



Visit our website  
[NWDrills.com](http://NWDrills.com)  
for more details

**CANADA** Head Office  
Northwest Drills  
11819 Tannery Road  
Surrey, BC V3V 3W8  
Office: 604.371.0303  
Cell: 604.307.9711  
salesinfo@nwdrills.com

**INDONESIA**  
PT Atlas Copco Nusantara  
Jln. Raya KKO, Commer-  
cial Estate Building 201  
12560, Jakarta Indonesia  
Tel: +62 (0)21 789 05 50  
anwar.rustanto@id.atlascopco.com

**MEXICO**  
Northwest Drills Mexico  
Calle 74 #2006 B, Col. Cerro de la Cruz,  
Chihuahua, Chihuahua, 31460, Mexico  
Yesenia Galindo +52 1 (614) 256-9797  
yeseniagalindoleyva@gmail.com

## NW750 SPECIFICATIONS

Leading the industry in groundbreaking and innovative technologies, Northwest Drills proudly introduces the new NW750.

A man portable drill, reaching depths of 750m with no single lift over 205 kg. (450 lbs.). This sets us above the rest and is unmatched by anyone in the industry. Our flagship drill, the new NW750 boasts a single engine, a powerful new drill head, and a safety monitoring package. All as standard equipment.

For more detailed descriptions of our products & technologies please visit our website at: [NWDrills.com](http://NWDrills.com)



MADE IN CANADA

Drill Model	NW1500	<b>NW750</b>	NW500	NW350	NW150
Depth Rating N (m)*	1500	750	500	350	150
Heaviest Lift (kg) [lbs]	205 [450]	205 [450]	205 [450]	190 [420]	171 [375]
Recommended Drill Rod	3m NWL	3m NWL	5' NTW	5' NTW	5' BTW
Pullback (kg) [lbs]	17,800 [39,200]	15,600 [34,400]	13,300 [29,400]	13,300 [29,400]	6,500 [14,400]
<b>Engines</b>					
VW 2.0l Turbo Diesel (176kw)	S (Qty:1)	-	-	-	-
VW 2.0L Turbo (135kw)	-	S (Qty:1)	O (Qty:1)	-	-
Kubota V1505-T (33kw)	O (Qty:5)	O (Qty:4)	S (Qty:3)	-	-
Kubota D1105-T (24kw)	-	-	-	S (Qty:3)	S (Qty:2)
<b>Winches</b>					
2000m	S	-	-	-	-
1000m	-	S	O	-	-
750m	-	-	S	O	-
500m	-	-	-	S	O
200m	-	-	-	-	S
Level Winder	O	O	O	-	-
Rod Hoist	O	O	-	-	-
<b>Heads</b>					
AVD H Head	S	-	-	-	-
P750 Through Chuck	-	S	-	-	-
NW500 Top Drive	-	-	S	-	-
NW350 Top Drive	-	-	-	S	S
<b>Foot Clamps</b>					
Bowl Style P Size	S	S	-	-	-
2x Clamp Break Out Table	O	O	-	-	-
Tie-Rod Style P Size	-	-	S	S	S

S: Standard Equipment O: Optional Equipment - Not Available \*Estimated values, may vary with ground conditions

## SUGGESTED TRANSPORT LIFTS

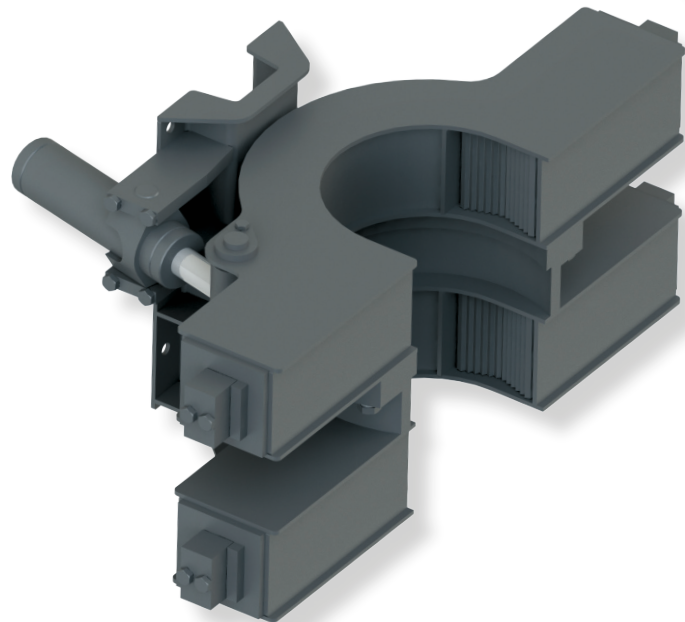
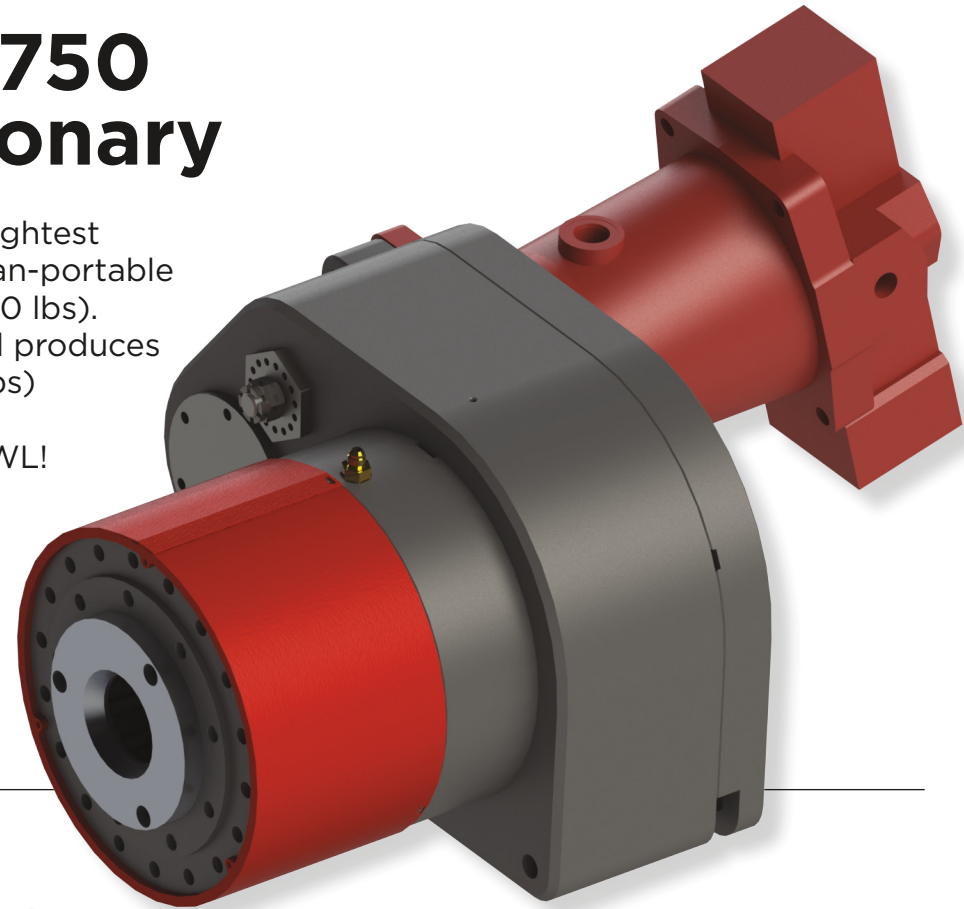
Base Frame, Mast, Foot clamp, Slider, Rotation Guard	202 kg (446 lbs)
Stinger, Stiff Legs, Feed Cylinder(s)	205 kg (450 lbs)
Rotation Motor	76 kg (168 lbs)
Winch (without cable)	54 kg (120 lbs)
Engine unit	205 kg (450 lbs)
Drill Head	169 kg (370 lbs)
Hydraulic Reservoir (with oil transferred)	202 kg (445 lbs)
Oil Transfer Tank, Cooler Skid	160 kg (353 lbs)
Control Panel	193 kg (380 lbs)
Down hole Pressure Pump (Bean 420)	174 kg (382 lbs)
Rod Hoist with Fuel Tank and Stand (without fuel)	128 kg (284 lbs)
<b>Total Weight for Shipping (incl. crates)</b>	<b>1850 kg (4100 lbs)</b>

# The NW750

is a modular portable drill rig that can be taken apart for transportation to remote areas by machinery, helicopter or carried by crews of men. The rig can be disassembled into modules of which the heaviest is less than 205 kg. (450 lbs.). The drill uses a wooden plank drill pad that is typically 4m x 4m (although can be less).

## Why the NW750 is so revolutionary

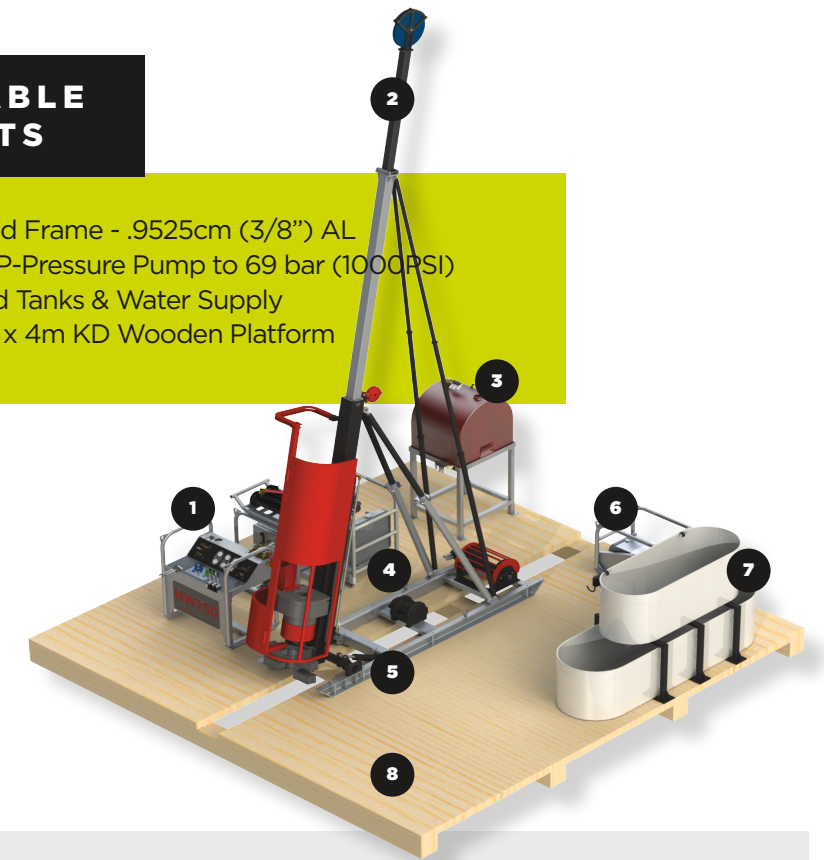
**Our Drill Head** is absolutely the lightest P head ever produced. A truly man-portable unit weighing in under 169 kg (370 lbs). Spring on, hydraulic off, this head produces an impressive 1803 nm (1330 ft-lbs) of torque and drills with any rods from BWL up to and including PWL!



**The Double Clamp Break Out Table** provides your drilling crew with the highest level of safety possible. Even hydraulically assisted wrenches are known as wrist breakers! This unit clamps and holds drill pipe while simultaneously clamping and breaking joints. It provides that extra joint breaking power and reduces the wear & tear on the drill head.

## TYPICAL NW750 MAN-PORTABLE DRILL PAD & ITS COMPONENTS

- 1 Hydraulic Control Panel
- 2 Extended Stinger for 3m (10') Core Barrel
- 3 Fuel Tank & AL Stand
- 4 1 VW 2.0l Turbo Diesel Engine
- 5 Feed Frame - .9525cm (3/8") AL
- 6 DHP-Pressure Pump to 69 bar (1000PSI)
- 7 Mud Tanks & Water Supply
- 8 4m x 4m KD Wooden Platform



## STANDARD FEATURES

### Drilling Mast:

Uses 3-meter rods (10 ft). Designed to drill between 45 and 90 degrees.

### Diesel Power Unit:

1 VW 2.0l Turbo Diesel engine adapted to industrial use. Nominal 165 HP. Power unit weighs 205 kg. (450 lbs.) including fluids and features a solid-state control box.

### P750 Drill Head: P Size Chuck

- Belt Drive
- 2.94:1 Reduction
- Spring Close, Hydraulic Open
- Max torque 1803 nm (1330 ft-lbs)

### Rotation Motor: 160 cc Variable Displacement Hydraulic Motor

- Max Motor Torque: 705 nm (520 ft-lbs).

### Feed Cylinders:

- 63.5 (2.5") Bore x 177.8 cm (70") Stroke Cylinders, one on each side
- 15,600 kg. (34,400 lbs.) back per cylinder
- Approx. 4 seconds to extend and 3 seconds to retract

### Foot clamp:

- Standard Bowl Style P Size Break Out Table
- Holding Capacity: 11,555 N (20,000 lbf)
- Max Rod Diameter: 114.3 mm (4 1/2")
- Hydraulic Close, Hydraulic Open

### Wireline Hoist:

- 1000m (3280 ft) capacity in 5 mm steel cable (3/16")
- Optional recommended Composite cable
- 8450 N (1900 lbs.) Pull Force and 100 m/min (331 ft/min) with empty drum

### Hydraulic System:

- Piston Pump System
- Return filter
- Hydraulic lines are installed and disconnected easily using quick disconnect fittings
- 56.8 L (15 gal.) Reservoir
- Dual Water-Oil Heat Exchangers

### Hydraulic Control:

- Control of Head and Foot Chucks w/ Manual Controls
- Speed Control for Mud Mixers and Water Pump
- Cylinder Feed Control with, Slow Feed, Float, and Holdback Modes

### Guard and Safety Features:

- Protective guard on all rotating components
- E stop for shutdown of engine

### Fuel Tank:

~227 L (50 gal US)

### Water Pump: Bean 420

### Depth Capacity:

B - 1000 m  
N - 750 m  
H - 400 m

### Rod Hoist:

- Comes standard with BG3 Rod hoist
- 181 kg. (400 lbs.) capacity
- Cable wedge anchor system
- Weight: 53 kg. (116 lbs.)